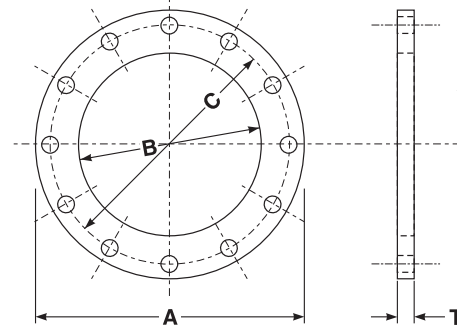


# HOSE TEC™ Forged "Plate-Style" Flanges

Chemicals/Petroleum • Construction • Material Handling

## 150# Carbon Steel & 150# Stainless Steel Forged



### 150# Carbon Steel Forged Plate-Style Flanges

Nominal Size	Part Number	"A" O. D.	"T" Thickness	"B" Bore	No. of Bolt Holes	Dia. of Bolt Holes	"C" Circle	Weight (lbs)	List Price
1/2"	CSPF0050	3 1/2"	1/2"	.77"	4	5/8"	2 3/8"	1.12	
3/4"	CSPF0075	3 7/8"	1/2"	1.10"	4	5/8"	2 3/4"	1.36	
1"	CSPF0100	4 1/4"	1/2"	1.36"	4	5/8"	3 1/8"	1.58	
1 1/4"	CSPF0125	4 5/8"	1/2"	1.70"	4	5/8"	3 1/2"	1.93	
1 1/2"	CSPF0150	5"	5/8"	1.95"	4	5/8"	3 7/8"	2.70	
2"	CSPF0200	6"	5/8"	2.44"	4	3/4"	4 3/4"	4.10	
2 1/2"	CSPF0250	7"	5/8"	2.94"	4	3/4"	5 1/2"	5.35	
3"	CSPF0300	7 1/2"	5/8"	3.57"	4	3/4"	6"	5.80	
4"	CSPF0400	9"	5/8"	4.57"	8	3/4"	7 1/2"	8.00	
5"	CSPF0500	10"	3/4"	5.66"	8	7/8"	8 1/2"	10.37	
6"	CSPF0600	11"	3/4"	6.72"	8	7/8"	9 1/2"	11.76	
8"	CSPF0800	13 1/2"	1"	8.72"	8	7/8"	11 3/4"	22.48	
10"	CSPF1000	16"	1"	10.88"	12	1"	14 1/4"	26.83	
12"	CSPF1200	19"	1"	12.88"	12	1"	17"	42.30	
14"	CSPF1400	21"	1"	14.14"	12	1 1/8"	18 3/4"	52.50	
16"	CSPF1600	23 1/2"	1 1/4"	16.16"	16	1 1/8"	21 1/4"	64.00	
18"	CSPF1800	25 1/8"	1 1/4"	18.15"	16	1 1/4"	23"	72.00	

### 150# Stainless Steel Forged Plate-Style Flanges

Nominal Size	Type 304		Type 316		"A" O. D.	"T" Thickness	"B" Bore	No. of Bolts	Dia. of Bolts	"C" Circle Holes	Weight (lbs)
	Part Number	List Price	Part Number	List Price							
1/2"	SSPF3040050		SSPF3160050		3 1/2"	1/2"	.77"	4	5/8"	2 3/8"	1.12
3/4"	SSPF3040075		SSPF3160075		3 7/8"	1/2"	1.10"	4	5/8"	2 3/4"	1.36
1"	SSPF3040100		SSPF3160100		4 1/4"	1/2"	1.36"	4	5/8"	3 1/8"	1.66
1 1/4"	SSPF3040125		SSPF3160125		4 5/8"	1/2"	1.70"	4	5/8"	3 1/2"	2.00
1 1/2"	SSPF3040150		SSPF3160150		5"	1/2"	1.95"	4	5/8"	3 7/8"	2.24
2"	SSPF3040200		SSPF3160200		6"	1/2"	2.44"	4	3/4"	4 3/4"	3.06
2 1/2"	SSPF3040250		SSPF3160250		7"	1/2"	2.94"	4	3/4"	5 1/2"	4.36
3"	SSPF3040300		SSPF3160300		7 1/2"	1/2"	3.57"	4	3/4"	6"	4.72
4"	SSPF3040400		SSPF3160400		9"	1/2"	4.57"	8	3/4"	7 1/2"	6.36
5"	SSPF3040500		SSPF3160500		10"	1/2"	5.66"	8	7/8"	8 1/2"	7.08
6"	SSPF3040600		SSPF3160600		11"	1/2"	6.72"	8	7/8"	9 1/2"	7.64
8"	SSPF3040800		SSPF3160800		13 1/2"	1/2"	8.72"	8	7/8"	11 3/4"	11.44
10"	SSPF3041000		SSPF3161000		16"	1/2"	10.88"	12	1"	14 1/4"	13.36
12"	SSPF3041200		SSPF3161200		19"	1/2"	12.88"	12	1"	17"	21.00
14"	SSPF3041400		SSPF3161400		21"	1/2"	14.14"	12	1 1/8"	18 3/4"	27.83
16"	SSPF3041600		SSPF3161600		23 1/2"	1/2"	16.16"	16	1 1/8"	21 1/4"	30.00
18"	SSPF3041800		SSPF3161800		25 1/8"	1/2"	18.15"	16	1 1/4"	23"	33.00

Call for price — (800) 878-5501.

All prices and specifications subject to change without notice.