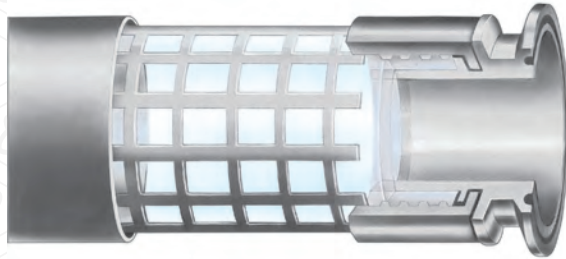


RUBBER FAB

technologies group

RFCSG



Caged FEP Sight Gauge

TEMPERATURE: -25°F to 300°F

END CONNECTIONS: 316L stainless steel sanitary Tri-Clamp®

Part Number	Hose ID Inch	Hose OD Inch	Wall Thickness	Max. Working Pressure @ 70°F
12RFCSG	0.75	1.00	0.13	150 psi
16RFCSG	1.00	1.25	0.12	250 psi
24RFCSG	1.50	1.75	0.12	200 psi
32RFCSG	2.00	2.25	0.12	100 psi
40RFCSG	2.50	2.75	0.13	100 psi
48RFCSG	3.00	3.25	0.13	100 psi
64RFCSG	4.00	4.25	0.13	100 psi

This product is factory fabricated.
Consult factory for individual length limits.

Features

- High pressure
- Liquid level indicators
- Sturdy, favorable in high stress applications
- High and low temperature rated
- Smooth, non-stick surface cleans easily and promotes minimal pressure drop
- Non-contaminating
- Will not impart taste or odor
- Shatterproof tube
- Will not discolor
- Unaffected by ultraviolet or sunlight

Certifications

- 3-A Sanitary Standards
- FDA 21 CFR 177.1550



26 Brookfield Drive • Sparta, New Jersey 07871

973.579.2959 • 866-442-2959 Toll Free • 973.579.7275 Fax • www.rubberfab.com

Tel: +52 (55) 6273-4046 / 6273-4047 / 2465-1016